

FGFR1 (R78H)

Catalog Number: 26251

Gene Symbol: FGFR1, BFGFR, CD331, CEK, FGFBR, FLG

Description: Anti-FGFR1 (R78H) Mouse Monoclonal Antibody

Background: The protein FGFR1 is highly conserved between members and throughout evolution. This particular family member of FGFR1 binds both acidic and basic fibroblast growth factors and is involved in limb induction. Mutations of FGFR1 protein have been associated with Pfeiffer syndrome, Jackson-Weiss syndrome, Antley-Bixler syndrome, osteoglophonic dysplasia, squamous cell lung cancer and autosomal dominant Kallmann syndrome.

Immunogen: A synthetic peptide from the internal region of FGFR1 which includes the mutation of R78H, human origin.

Tested applications: ELISA, WB, IHC

Recommended dilutions:

ELISA: 1:1000-1:2000

WB: 1:500-1:1000

IHC: 1:50-1:100

Concentration: 0.5 mg/ml

Host: Mouse

Clonality: Monoclonal

Purity: Purified from ascites

Format: Liquid

Storage buffer:

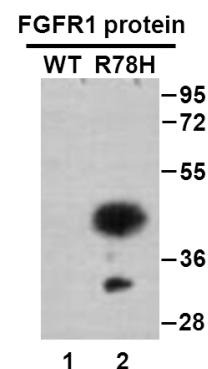
Preservative: no

Constituents: PBS (without Mg^{2+} and Ca^{2+}), pH 7.4, 150 mM NaCl, 50% glycerol

Species Reactivity: Recognizes R78H mutant, but not wild-type FGFR1 of vertebrates.

Storage Conditions: Store at $-20^{\circ}C$. Avoid freeze / thaw cycles.

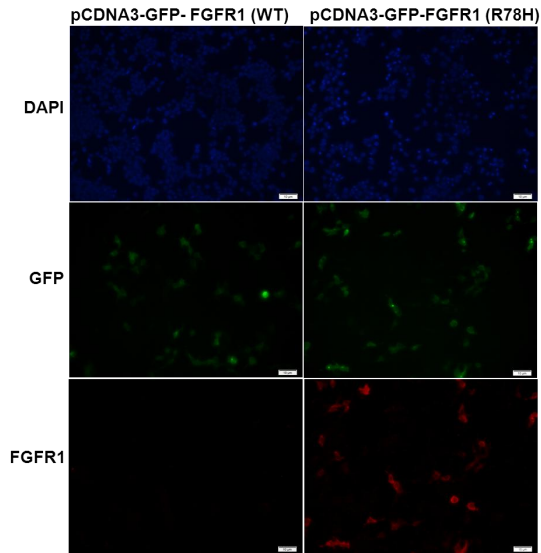
Western blot:



WB: Anti- FGFR1 (R78H) mAb

Western blot analysis of recombinant FGFR1 (R78H) and wildtype proteins. Purified His-tagged FGFR1 (R78H) protein (22-376aa, 45KD, lane 2) and corresponding wildtype protein (lane 1) were blotted with anti-FGFR1 (R78H) monoclonal antibody (Cat. #26251).

Immunofluorescence:



Immunofluorescence of cells expressing FGFR1 proteins with anti-FGFR1 (R78H) antibody. HEK293T cells were transfected with pCDNA3-GFP-FGFR1 (WT) plasmid (left column) or pCDNA3-GFP-FGFR1 (R78H) plasmid (right column), then fixed and stained with anti-FGFR1 (R78H) monoclonal antibody (Cat. #26251).